

CEE Floor box: 7022A

Specification:

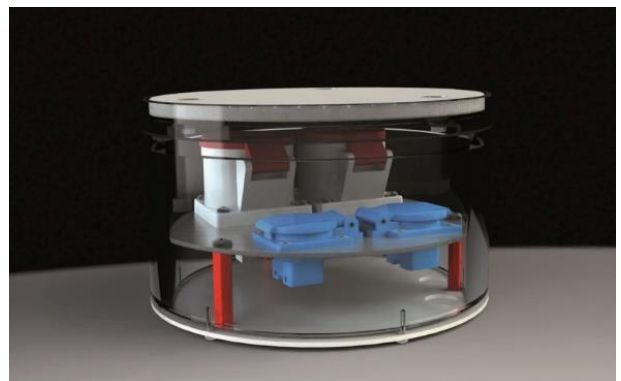
Item No:	7022A
Product line:	CEE Floor box
Units:	4
Mounting (qty):	2x SCHUKO socket with VDE certification 1x CEE 5/16A 400V/6h socket with VDE certification 1x CEE 5/32A 400V/6h socket with VDE certification
Construction:	Round
Ground:	Suitable for stone, concrete and asphalt
Type of inst.:	Flush mounted
Lid character.:	<ul style="list-style-type: none"> • Removable • Lockable with tool
Environment:	Outdoor and indoor
Protection:	IP67
EAN:	4058796001790

Technical data:

Material:	<ul style="list-style-type: none"> • Housing made of solid aluminum • Lid made of solid aluminum • Equipment carrier made of aluminum
Colour:	Aluminum (nature)
Surface:	Anodised
Weight:	6400g
Dimensions:	∅ 250 x 152mm
Install. Dim.:	∅ 250 x 152mm
Supply line:	3x bottom; ∅ 25mm
Load:	900kg

Features:

Delivery cond.:	Complete and pre-assembled
-----------------	----------------------------



Errors and technical changes reserved.