

Floor box system: 8902B

Specification:

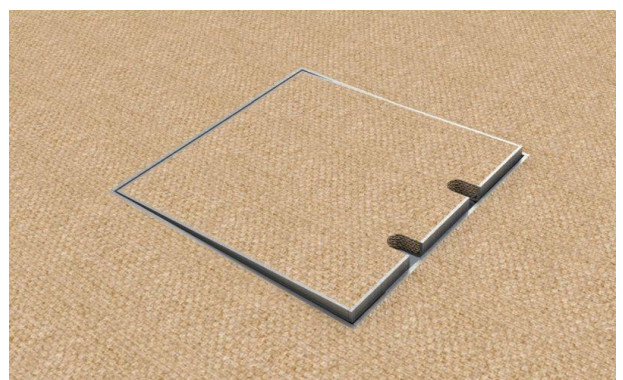
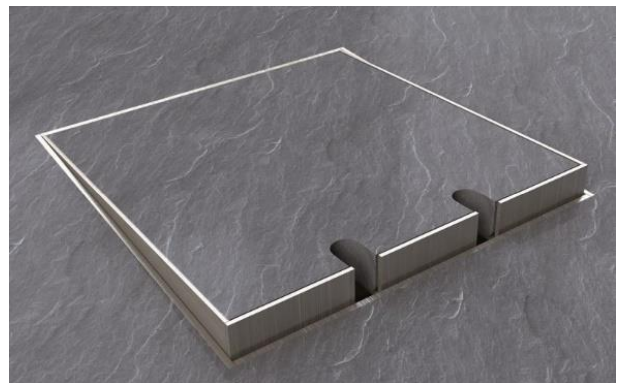
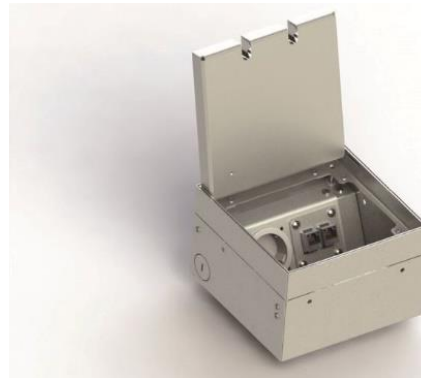
Item No:	8902B
Product line:	Floor box system
Units:	2
Mounting (qty):	2x SCHUKO socket with VDE certification
Construction:	Square
Ground:	Suitable for screed
Type of inst.:	Flush mounted
Lid character.:	<ul style="list-style-type: none"> • Own floor covering applicable • Hinged • Removable • Closable with plugged in plugs
Floor cover. recess:	15mm
Environment:	Dry to moist
Protection:	IP20
EAN:	4058796002360

Technical data:

Material:	<ul style="list-style-type: none"> • Adapter box made of galvanized steel sheet • Lid made of stainless steel (1,5mm / 1.4301) • Equipment carrier made of aluminum
Colour:	Stainless steel
Surface:	Grindet
Weight:	1500g
Dimensions:	155 x 157 x 103mm
Install. Dim.:	155 x 157 x 103mm
Height-adjustable:	30mm
Supply line:	2x lateral; 2x back; 2x bottom; Ø 25mm
Load:	120kg

Features:

Delivery cond.:	Complete and pre-assembled
Opt. attachments:	Item No. 89NS -Leveling kit for height correction



Errors and technical changes reserved.