

Floor box system: 8900B

Specification:

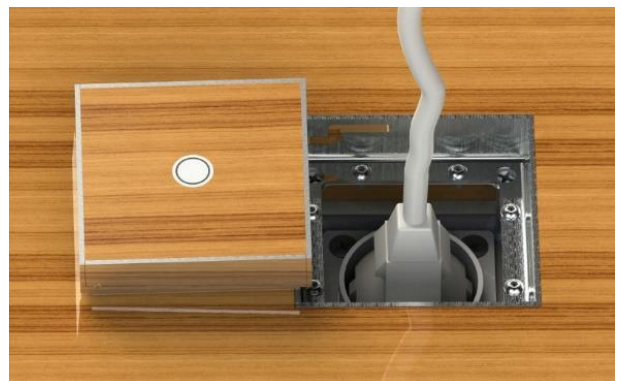
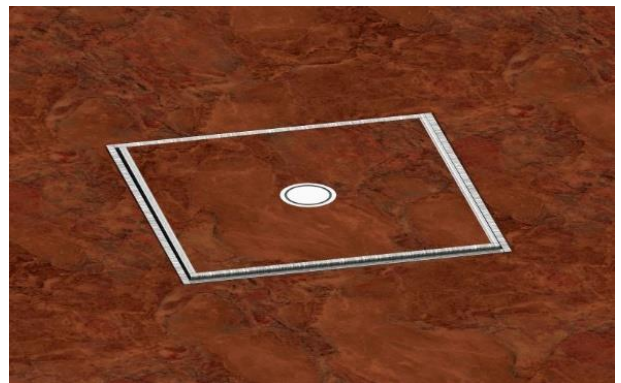
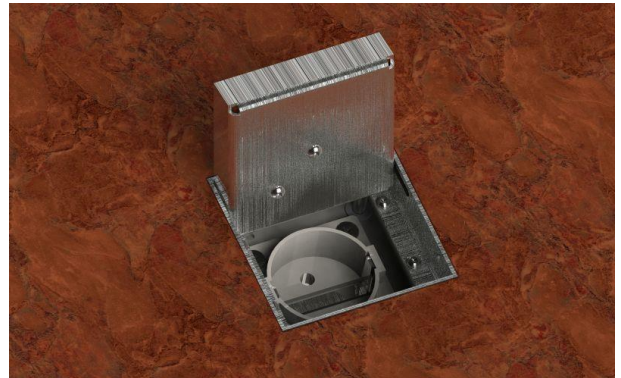
Item No:	8900B
Product line:	Floor box system
Units:	1
Mounting (qty):	1x SCHUKO socket with VDE certification
Construction:	Square
Ground:	Suitable for screed
Type of inst.:	Flush mounted
Lid character.:	<ul style="list-style-type: none"> • Own floor covering applicable • Hinged • Removable
Floor cover. recess:	15mm
Environment:	Dry to moist
Protection:	IP30
EAN:	4058796005415

Technical data:

Material:	<ul style="list-style-type: none"> • Adapter box made of galvanized steel sheet • Lid made of stainless steel (1,5mm / 1.4301) • Equipment carrier made of aluminum
Colour:	Stainless steel
Surface:	Grindet
Weight:	500g
Dimensions:	76 x 78 x 85mm
Install. Dim.:	76 x 78 x 85mm
Height-adjustable:	20mm
Supply line:	1x front; 1x back; 2x bottom; Ø 25mm
Load:	120kg

Features:

Delivery cond.:	Complete and pre-assembled
-----------------	----------------------------



Errors and technical changes reserved.