

EASY INTEGRATION
AND SMART CONTROL
OF LIGHTS

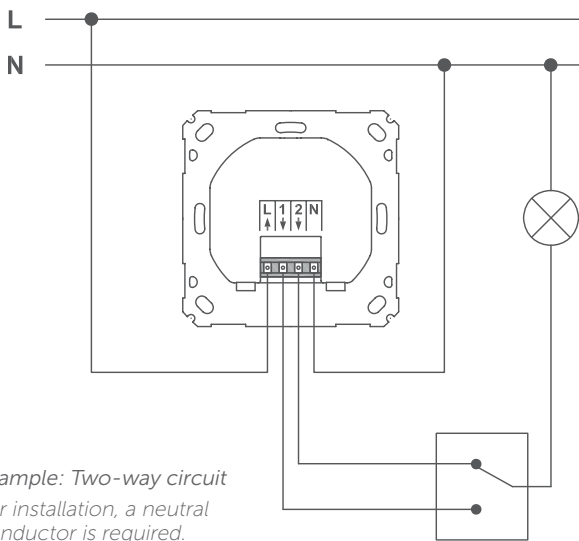
Switch Actuator and Meter for brand switches

HmIP-BSM

The Homematic IP Switch Actuator offers intelligent control of luminaries. The invisible solution for flush-mounted installation can be easily retrofitted. Thus, switch series that have already been installed can simply continue to be used. Afterwards, lights can be controlled easily via smartphone, automatically via individual time profiles or – as used to – via push-button.



homematic ^{IP}
Smart Living, Simply Exciting.



Example: Two-way circuit
For installation, a neutral conductor is required.

SMART LIGHT CONTROL

Switching of the connected lights provides for the ideal lighting atmosphere in the smart home.

The integrated metering function allows for reliable detection of consumers that are switched on. This means that the switch actuator and meter can be used in an intermediate circuit, two-way circuit or off circuit.

FLEXIBLE OPERATION

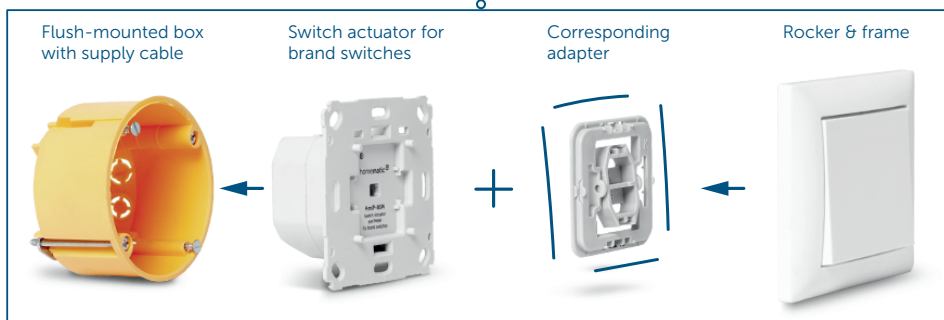
- ✓ Directly with existing switch series
- ✓ Wirelessly using Homematic IP Push-buttons, Remote Controls or Motion Detectors
- ✓ Via the Homematic IP smartphone app
- ✓ Via adjustable time profiles for automatic switching of lights at any time
- ✓ Using voice control (e.g. via Amazon Alexa or Google Assistant)

INVISIBLE INSTALLATION INTO EXISTING DESIGNS

Can also be integrated into existing switches by making use of existing frames and rockers. With the appropriate adapter, the device can be integrated into the most popular switch designs of leading manufacturers (an overview of compatible manufacturers is available at www.homematic-ip.com).

EASY INSTALLATION

Compact design for installation into standard flush-mounted boxes. The screwless connecting terminals enable easy and secure wiring.



TECHNICAL SPECIFICATIONS

Supply voltage	230 V/50 Hz
Current consumption	5 A max.
Standby power consumption	0.2 W
Minimum load for intermediate or two-way circuit	1 W
Maximum switching capacity	1150 W
Load type	ohmic load
Relay	changeover contact
Cable type and cross section	rigid and flexible cable, 0.75 - 1.5 mm ²
Installation	only in normal commercial switch boxes (device boxes) in accordance with DIN 49073-1
Degree of protection	IP20
Ambient temperature	5 to 35 °C
Dimensions (W x H x D)	71 x 71 x 37 mm
Weight	47 g
Radio frequency band	868.0-868.6 MHz 869.4-869.65 MHz
Typ. open area RF range	240 m

To enable operation, the device has to be connected with one of the following solutions:

- Homematic IP Access Point with free smartphone app and free cloud service
- Central Control Unit CCU2/CCU3 with the local user interface WebUI
- Third-party solutions of partners

LOGISTICAL DATA

Product reference	142720A0
EAN code	4047976427208
Short description	HmIP-BSM
Packing unit	90
Packing dimensions	122 x 112 x 48 mm
Weight incl. packaging	131.8 g

PACKAGE CONTENTS

Homematic IP Switch Actuator and Meter for brand switches
Screws 3.2 x 15 mm (2x)
Screws 3.2 x 25 mm (2x)
User manual