

Colibri Quick Manual

1.Installation - place your Colibri on your desired location, connect the power supply and connect Colibri to the network..



2. Download and install bOS Configurator on your PC. You can get bOS Configurator on our web page:
<https://www.comfortclick.com/BOS/Software/BOSConfig>

3. Connect to Colibri

3.1 a) Connect locally - make sure that your PC with bOS Configurator is connected to the same network as your Colibri than follow the steps below.

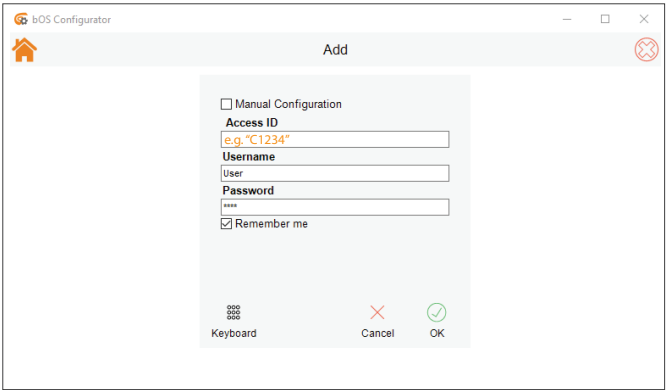
b) Connect remotely – if you are connecting to your Colibri remotely via the Internet, port forwarding should be enabled on your router. Port 443 (TCP) should be forwarded to your Colibri's local IP. More about port forwarding can be found in bOS Server manual on our web page.

3.2 Open bOS Configurator.

3.3 Click on the menu button on the top right corner and select **Add**.



3.4 Enter your Access ID, User name and Password




By default, Access ID is the **serial number of your Colibri**. You can find the serial number on the sticker on the bottom of your Colibri (e.g. C1234). Access ID is a unique name for accessing the bOS Server. This name enables adding profile and accessing your bOS Server, without the need of knowing it's IP address.


Enter Username: **User** and Password: **Pass** and click OK.

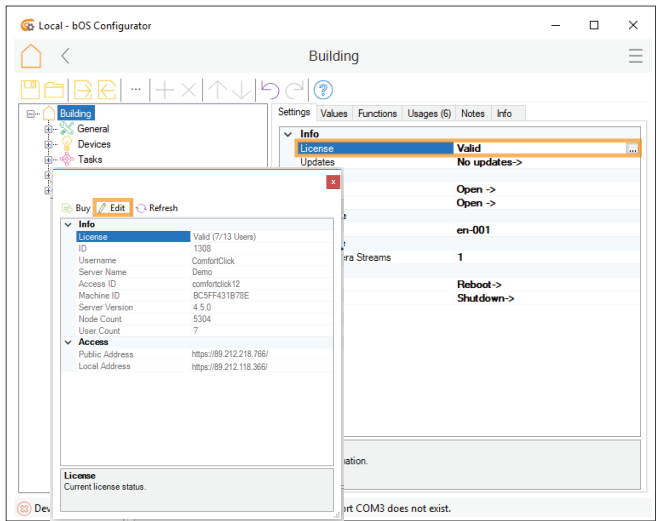
4. Start creating your bOS configuration or open an existing configuration.

Please check our support tools for more information on how to work with bOS:
www.comfortclick.com/Support

 The procedure below is optional; it is required only if you want to change your default Access ID and other access settings.

Edit Colibri Access Settings

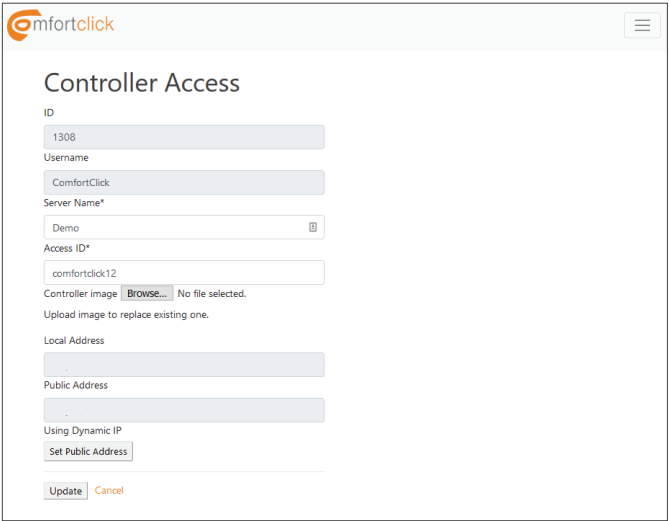
1. Open bOS Configurator.
2. Click  button under **Building - License**.
3. Click **Edit** button



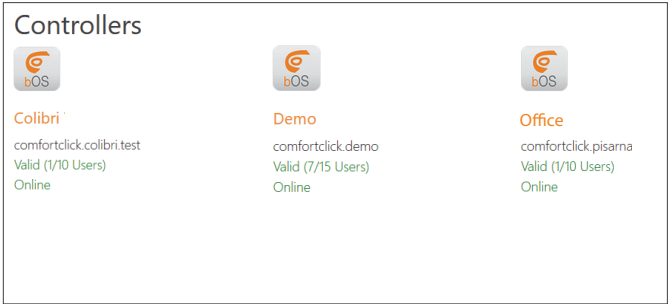
3. Login to your account on ComfortClick web page www.comfortclick.com



4. You can now change your **Server name, Access ID, Public Address** and **Local Address**.



5. You can also see the list of all your other Controllers and edit their settings under your account profile.



Warranty Terms and Conditions

ComfortClick d.o.o. with its office at Cesta v Klece 16, 1000 Ljubljana, Slovenia, other contact information is available at: www.comfortclick.com (hereinafter „the Manufacturer“) guarantees that the device sold (hereinafter: „the Device“) is free from material and manufacturing defects.

The Manufacturer shall be responsible for malfunctioning of the Device resulting from physical defects inherent in the Device that cause its operation to be incompatible with the specifications within the period of:

24 months from the date of purchase by the consumer,
12 months from the date of purchase by a business customer (the consumer and business customer are further collectively referred to as „Customer“).

The Manufacturer shall remove any defects revealed during the guarantee period, free of charge, by repairing or replacing (at the sole discretion of the Manufacturer) the defective components of the Device with new or regenerated components. The manufacturer reserves the right to replace the entire Device with a new or regenerated device. The Manufacturer shall not refund money paid for the device.

Before making a complaint, the Manufacturer recommends using the online support available at <http://www.comfortclick.com/Support>

In order to make a complaint, the Customer should contact the Manufacturer via the email: support@comfortclick.com.

The faulty device shall be provided by the Customer with complete standard equipment and documents proving its purchase.

The cost of transporting the Device shall be covered by the Customer. For unjustified complaints, Manufacturer may charge the Customer with costs related to the case.

Defects shall be removed within 30 days from the date of delivering the Manufacturer. The guarantee period shall be extended by the time in which the Device was kept by Manufacturer.

Manufacturer shall not accept a complaint claim when:

- the Device was misused or the manual was not observed,
- the Device was provided by the Customer incomplete, without accessories
- it was determined that the fault was caused by other reasons than a material or manufacturing defect of the Device
- the guarantee document is not valid or there is no proof of purchase,

Manufacturer shall not accept a complaint claim when:

- the Device was misused or the manual was not observed,

- it was determined that the fault was caused by other reasons than a material or manufacturing defect of the Device
- the guarantee document is not valid or there is no proof of purchase,

The guarantee shall not cover:

- mechanical damages (cracks, fractures, cuts, abrasions, physical deformations caused by impact, falling or dropping the device or other object, improper use or not observing the operating manual);
- damages resulting from external causes, e.g.: flood, storm, fire, lightning, natural disasters, earthquakes, war, civil disturbance, force majeure, unforeseen accidents, theft, water damage, liquid leakage, battery spill, weather conditions, sunlight, sand, moisture, high or low temperature, air pollution;
- damages caused by malfunctioning software, attack of a computer virus, or by failure to update the software as recommended by the Manufacturer;
- damages resulting from: surges in the power and/or telecommunication network, improper connection to the grid in a manner inconsistent with the operating manual, or from connecting other devices not recommended by the Manufacturer.
- damages caused by operating or storing the device in extremely adverse conditions, i.e. high humidity, dust, too low (freezing) or too high ambient temperature. Detailed permissible conditions for operating the Device are defined in the operating manual;
- damages caused by using accessories not recommended by the Manufacturer
- damages caused by faulty electrical installation of the Customer, including the use of incorrect fuses;
- damages caused by Customer's failure to provide maintenance and servicing activities defined by Manufacturer
- damages resulting from the use of spurious spare parts or accessories improper for given model, repairing and introducing alterations by unauthorized persons;
- defects caused by operating faulty Device or accessories.

The guarantee shall not cover natural wear and tear of the Device and its components listed in the operating manual and in technical documentation as such elements have a defined operational life.

The Device Guarantee shall not exclude, limit or suspend the Customer's warranty rights.

The Manufacturer shall not be liable for damages to property caused by defective device. The Manufacturer shall not be liable for indirect, incidental, special, consequential or punitive damages, or for any damages, including, inter alia, loss of profits, savings, data, loss of benefits, claims by third parties and any other damages arising from or related to the use of the Device.

Technical Data

Software: bOS PRO License, included 1 User

Size: 122 mm x 122 mm x 39 mm (WxHxD)

CPU: 1,2 GHz quad-core ARM

RAM: 1 GB

Disk: SD card 32 GB

OS: Linux

Gateways / Connectors: Z-Wave / 4 x USB, 1 x Ethernet port

Power: 100-240V 50/60 Hz

Power consumption: approx. 2 W



Miscellaneous

- Always shut down Colibri properly by shutting it down in bOS Configurator.
- Don't shut down Colibri by unplugging it from the power supply.
- DHCP server should be running on the network in order to automatically obtain IP address on Colibri.
- Make sure that bOS Server and bOS Configurator are both of the same software version.
- Holding the reset button for 1 second will restart your Colibri.
- Holding the reset button for 5 seconds will reset the network settings to default DHCP.
- Holding the reset button for 10 seconds will reset your configuration.
- Do not expose this product to moisture, water or other liquids
- Do not attempt to examine or repair this product by yourself.
- This product is designed for indoor use only.
- The use of UPS is recommended.



Herby, ComfortClick d.o.o. declares that the device is in compliance with Directive 2014/30/EU.



Device labelled with this symbol should not be disposed with other household wastes. It shall be handed over to the applicable collection point for the recycling of waste electrical and electronic equipment.

Thank you for buying ComfortClick products.

For any additional information please visit www.ComfortClick.com.



ComfortClick d.o.o.
www.comfortclick.com
info@comfortclick.com



Colibri Z-Wave

