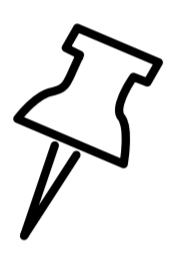


6V PSU for Hub 2/ Hub 2 Plus/ReX 2

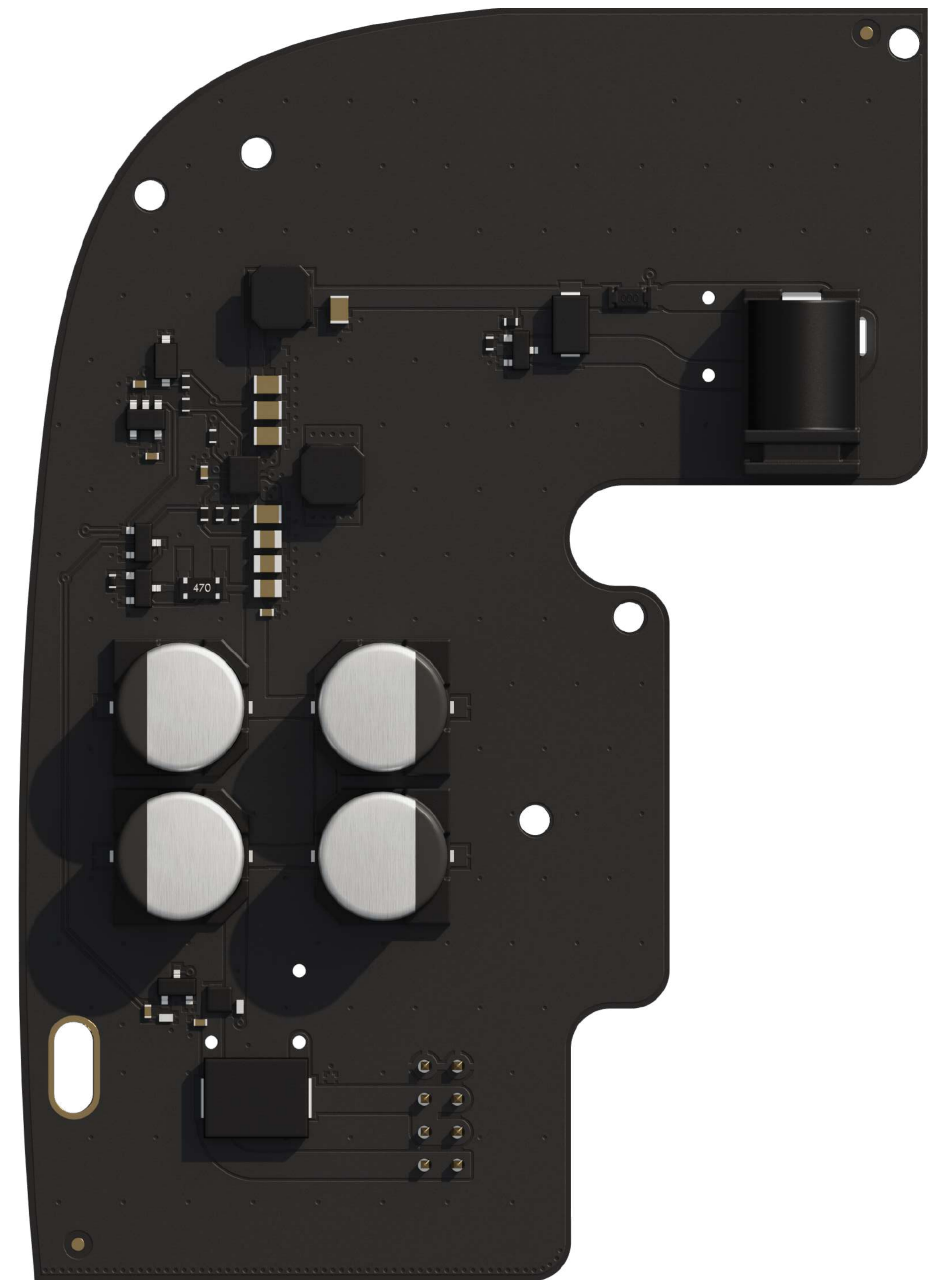
An alternative power supply unit for connecting Ajax control panels or range extenders to a low-voltage power source. Replaces the built-in 110/230 V~ power supply unit.



Detailed information about the device is available via QR code or by the link:



<https://support.ajax.systems/manuals/6vpsu-hub2>



Installation

It takes 10 minutes for a professional electrician or installation engineer to install an alternative power supply unit into a control panel or range extender. 6V PSU features a standard socket connecting the power jack plug. A terminal adapter is included in the set.

The process requires a PH1 screwdriver and the installation manual.

The manual is available by scanning a QR code or at the link:

support.ajax.systems/manuals/6vpsu-hub2.



Use cases

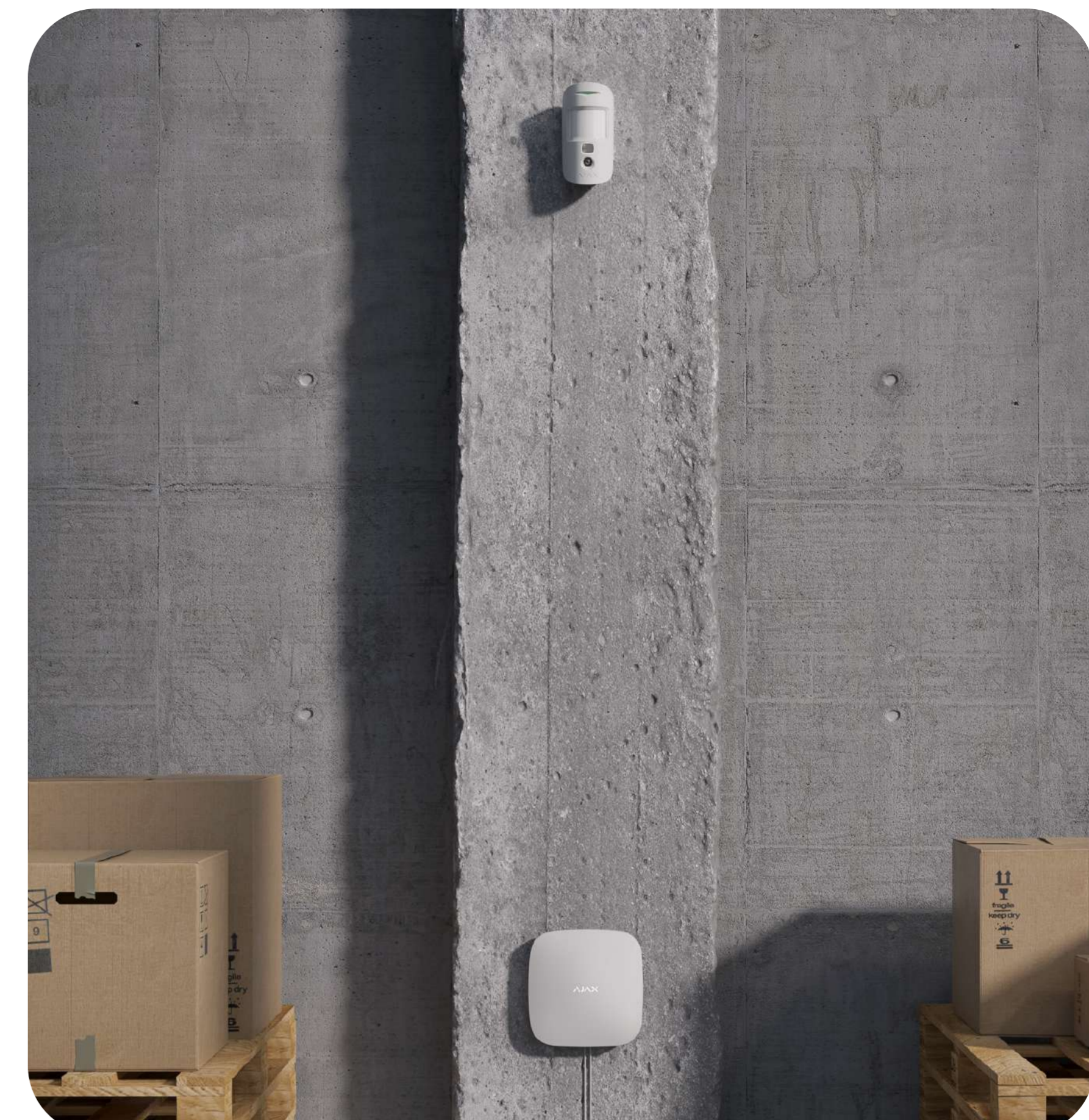
With an alternative 6V PSU, the hub or range extender can operate from an external power supply without connecting to the mains, providing the facility with professional security for years. Wireless Ajax devices operate on pre-installed batteries for 2 to 10 years. The system monitors the facilities 24/7 and is ready to protect construction sites and empty properties with no electricity from burglars, vandals, and unauthorized occupation.



A summer house “mothballed” for winter with the electricity turned off




Active or frozen construction with high-cost materials and equipment inside



Warehouses with no or unstable power supply

Technical specifications

<p>Compatibility</p> <p>Hubs Hub 2 (2G) Hub 2 (4G) Hub 2 Plus</p> <p>Range extenders ReX 2</p>	<p>Connection to mains</p> <p>Socket 6.5 × 2 mm</p> <p>Plug 5.5 × 2.1 mm Power jack</p>
<p>Recommended batteries</p> <p>Zinc-air alkaline batteries with the operating voltage of 4.2–10 V_{DC}</p> <p>Detailed list of recommended batteries: support.ajax.systems/faq/batteries-compatible-with-6v-psu</p> 	<p>Input</p> <p>Voltage 4.2–10 V_{DC}</p> <p>Current up to 1 A</p> <p>Switch-on voltage 4.2 V_{DC} ±2,5%</p> <p>Switch-off voltage 3–3.4 V_{DC} Depending on the load</p>

<p>Board</p> <p>Colour N/A</p> <p>Dimensions 98 × 70 × 17 mm</p> <p>Weight 26 g</p>	<p>Installation</p> <p>Installation method inside the hub or range extender enclosure</p> <p>Operating temperature range from -10°C to +40°C</p> <p>Operating humidity up to 75%</p>
<p>Output</p> <p>Voltage 4.8 V_{DC} ± 5%</p> <p>Current up to 1.5 A</p>	<p>Complete set</p> <p>6V PSU for Hub 2/Hub 2 Plus/ReX 2 Terminal adapter Quick Start Guide</p>