

FEATURES

- 6.5" coaxial audio loudspeaker.
- Available in the following colors:
 - White (RAL 9006) – ZACLS6
 - Anthracite (RAL 9011) – ZACLS6A
- Compact loudspeaker with white metallic grille and adjustable plastic clamps.
- Built-in tweeter.
- Flush-mounted.
- Dimensions Ø220 x 90 mm.
- Conformity with the CE directives.

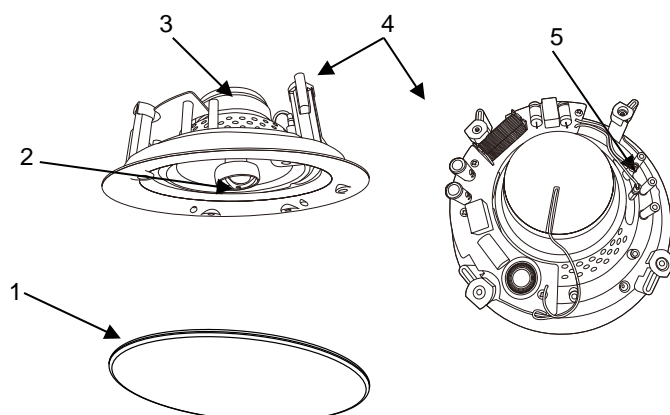


Figure 1. ZACLS6

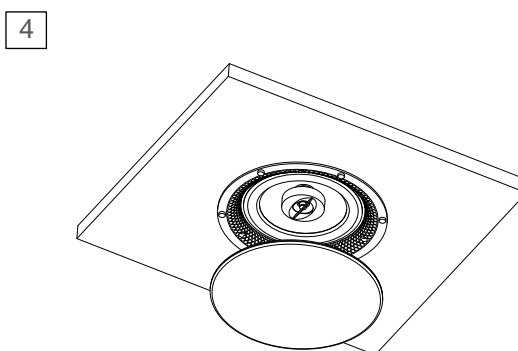
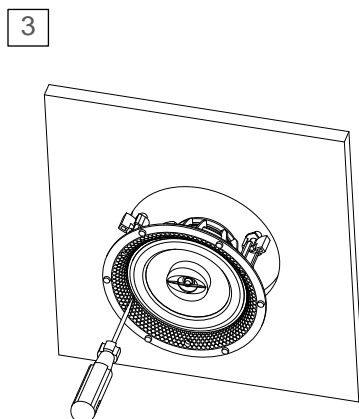
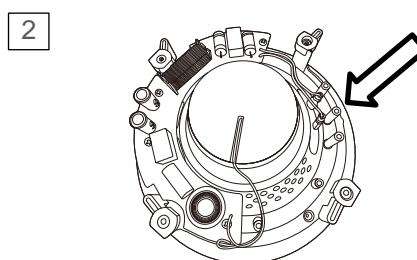
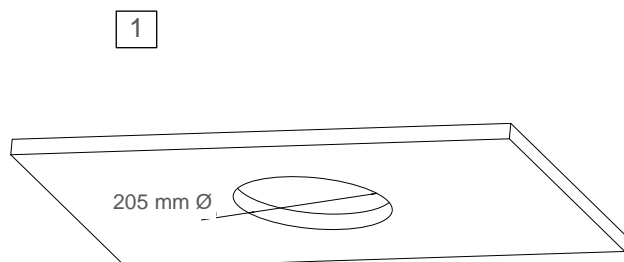
1. Metallic grille	2. Tweeter	3. Loudspeaker magnet	4. Adjustable plastic clamps	5. Audio Input
--------------------	------------	-----------------------	------------------------------	----------------

GENERAL SPECIFICATIONS	
CONCEPT	DESCRIPTION
Type of device	Electric operation control device
External power supply	Not required
Operation temperature	-15 °C to +40 °C
Storage temperature	-20 °C to +55 °C
Operation humidity	5 to 95% RH (no condensation)
Storage humidity	5 to 95% RH (no condensation)
Complementary characteristics	Class B
Protection class	III
Operation type	Continuous operation
Device action type	Type 1
Electrical stress period	Long
Degree of protection	IP20, clean environment
Installation	Flush-mounted
Minimum clearances	Not required
Weight	1200 g

LOUDSPEAKER SPECIFICATIONS	
CONCEPT	DESCRIPTION
Maximum power (RMS)	60 W
Loudspeaker model	Coaxial
Impedance	8 Ω
Frequency response	55 Hz – 22 kHz
Sensitivity (1W, 1m)	88 dB _{SPL}
Installation hole diameter	205 mm
Cable cross-section	0.5 mm ² to 2.5 mm ² (26-12 AWG)
Connection method	Pressure terminal block

ASSEMBLY DIAGRAM

1. Mark and make a hole for the loudspeaker by using the template bundled with the product.
2. Make the connections with the AudiInRoom device paying attention to the polarity.
3. Align the loudspeaker with the hole made on the surface and insert it. Tighten the screws to close the adjustable plastic clamps. Please, pay attention to the width of the ceiling.
4. Place the metallic grille on the loudspeaker with the aid of the magnets. Perform this step without removing the black filter from the grille, as it prevents small particles from entering the loudspeaker compartment.



SAFETY INSTRUCTIONS

- Installation should only be performed by qualified professionals according to the laws and regulations applicable in each country.
- Keep the device away from water and do not cover it with clothes, paper or any other material while in use.
- The device must not be lubricated. Contact with dust, dirtiness or paint must be avoided.



- The WEEE logo means that this device contains electronic parts and it must be properly disposed of by following the instructions at <http://zennio.com/wEEE-regulation>.